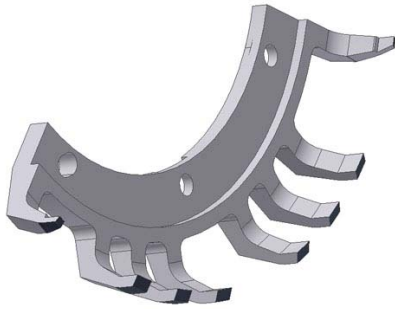




*Quality and Value
Through Engineering*

◆ Applied Materials

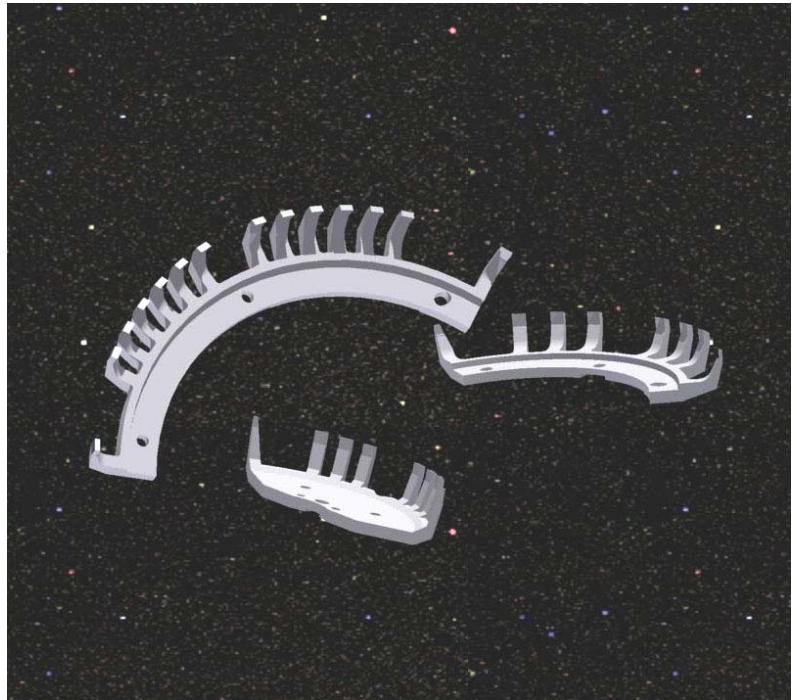


PN72-8001

Signet Products eight inch fixed restraint.

Applied Materials PARTS
All Implanters

Signet Products
AMAT Fixed Restraint



Signet 6", 8" and 12"

The Signet now offers the fixed restraint for the 6, 8, and 12 inch tools. These are duplicates of the OEM parts available at a lower cost. Signet makes them in sets in multiples of the number of parts that are on the end station disk.

Signet offers them both with or without Silicon coated tips. The OEM only sells them with the coated tips which adds significantly to their cost.

These part images are modeled using inventor 2008, CNC machined in controlled lots, robotically thermal sprayed with silicon and clean room processed to insure uniformity and cleanliness.

Signet PN#	OEM PN#	Description
72-94705	0020-94705	Si Coated Fixed Restraint, 6" (150mm)
72-8001		Si Coated Fixed Restraint, 8" (200mm)

Ref. = Design Alteration of OEM Part

Signet Products Inc.

2 Davis Drive
Belmont, CA 94002

PDS72-420888.pdf Revised 10/4/2007

Phone 650 592-3575

Fax 650 592-7223

e-mail sales@signetproducts.com

Web www.signetproducts.com

Ref. = Design Alteration of OEM Part

Signet Products Inc.

2 Davis Drive
Belmont, CA 94002

PDS72-420888.pdf Revised 10/4/2007

Phone 650 592-3575

Fax 650 592-7223

e-mail sales@signetproducts.com

Web www.signetproducts.com