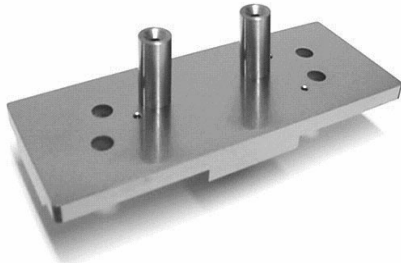




- ◆ Longer life
- ◆ Easy cleaning

### OEM Base Plate



This photo is a bottom view of the OEM base plate.



This photo is a top view of Signet Part Number 30-4421 showing the clean design.

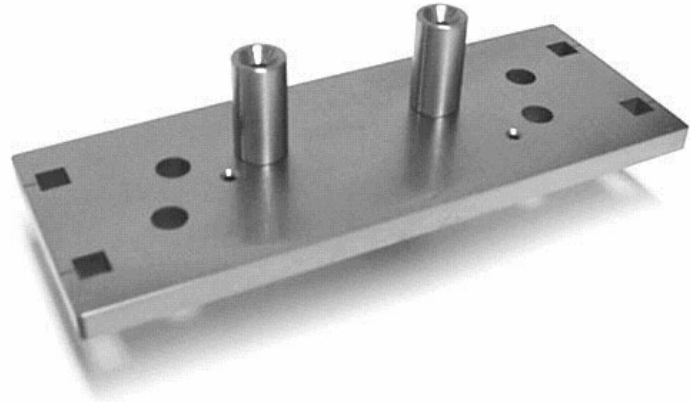
**Signet also makes solid source version without the gas holes Signet Part Number 30-4422.**

**Note:** Both Signet parts 30-4421 and 30-4422 must be used with Signet mating end plates part 30-4440.

## VSEA - IMPLANTER PARTS

Model VIIS<sup>ta</sup>® 810 and VIIS<sup>ion</sup>®

### Signet Base Plate



### Signet Part Number 30-4421

#### Base plate for gas only – Bottom view

Signet uses a simpler and stronger design that minimizes the amount of machining and material loss while providing a stronger and more positive locating method for holding the side and end plates in place. Signets end plates are held in place by tabs that fit in the square holes rather than the thin fragile lips. This reduces the cost of the part, makes cleaning easier, and also makes assembly easier and faster.

### OEM Base Plate



Note broken lip

The original OEM design pictured above uses a 3/8" thick tungsten base plate that was extensively machined leaving four fragile lips to locate the side and end plates. These lips are prone to breaking in use and during maintenance and handling.

Signet PN	OEM PN	Description
30-4421	E17094421Ref	Gas only base plate, W
30-4422	E17094422Ref	Solid source base plate, W
30-4440	E17124440Ref	End plate

#### Signet Products Inc.

2 Davis Drive  
Belmont, CA 94002  
PDS30-4421.pdf Revised 02/13/12

#### Ref. = Design Alteration of OEM Part

Phone 650 592-3575  
Fax 650 592-7223  
e-mail [sales@signetproducts.com](mailto:sales@signetproducts.com)  
Web [www.signetproducts.com](http://www.signetproducts.com)