



Signet Box Liner for Axcelis Ion Implanter

- ◆ Significantly extends arc chamber life
- ◆ Easy cleaning
- ◆ Faster filament changes
- ◆ Self aligning
- ◆ Interchangeable with Signets GSD source

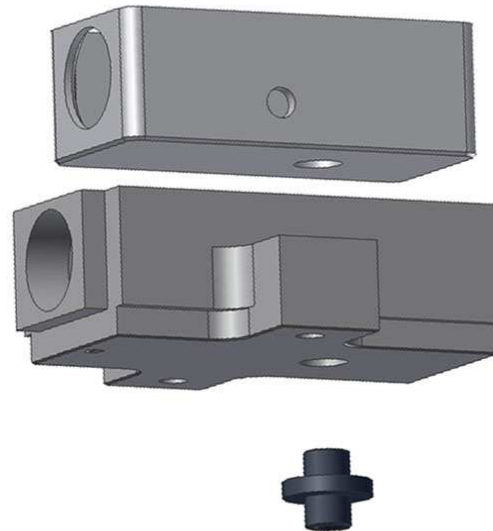


Signet Part 40-8160

Pictured above is the arc chamber assembled with the box liner 40-3340-42 and gas inlet nipple 40-3341.



A cutaway side view of the modified arc chamber with the box liner and gas inlet nipple.



Signet Molybdenum Box Liner 40-33401-42, modified arc chamber 40-8160 and gas inlet nipple 40-3341 for gas and solid source

With the Signet design you replace a consumable Box Liner at less than half the cost of the complete arc chamber. The box liner fits into a modified arc chamber and when assembled maintains the same internal dimensions as the OEM arc chamber. The Signet gas inlet nipple is graphite and mates to the OEM gas line and it extends through the arc chamber and into the box liner. It is a consumable part that extends the life of the Box Liner and replaces the graphite part that mates with the bottom of the OEM arc chamber. The added benefit of this system is that the box liner can be removed without removing the arc chamber from the source. The box liner is available in gas only and gas and solid source designs.

Notes:

1. This design requires that a Signet Top plate be used.
2. If you currently use either of the Signet Box Liners you will only have to stock one as they are interchangeable.

Signet P/N	Description
40-3340-42	Molybdenum Box Liner, Box Liner, gas only
40-33401-42	Molybdenum Box Liner, Box Liner, gas & solid source
40-7260	Top Plate for Box Liner
40-8160	8250 Arc Chamber Modified for Box Liner
40-3341	Gas Inlet Nipple, Graphite

Signet Products Inc.

2 Davis Drive
Belmont, CA 94002
PDS40-8160 Revised 02/08/12

Ref. = Design Alteration of OEM Part

Phone 650 592-3575
Fax 650 592-7223
e-mail sales@signetproducts.com
Web www.signetproducts.com