



Signet Insulator GSD Bias Aperture

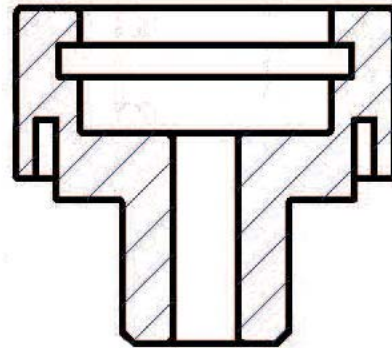
- ◆ Right Parts
- ◆ Right Quantity
- ◆ Improved Life



Signet's Alumina Insulator 40-7441



A package of 40-7441 Alumina Insulators.



Signet now offers this enhanced alumina insulator for GSD machines.

The OEM insulator is made of phenolic resin. This material burns through from electric arcing. In addition, this design is also prone to coating and shorting and either of these problems can cause them to fail fairly quickly.

Signet's advanced insulator design uses Alumina which eliminates the burn through problem. It also has additional groves which lengthen the time it takes to coat and short this significantly increases the life of the part. These parts have been used by some of our customers for several years with excellent results.

Our Signet 40-7441 insulators come conveniently packaged in a tube of ten.

Signet PN	Description	qty	OEM P/N
40-7441	Insulator GSD Bias Aperture	10	17174410Ref



Ref. = Design Alteration of OEM Part